

Vehicle Readiness for Link Openings in 2024

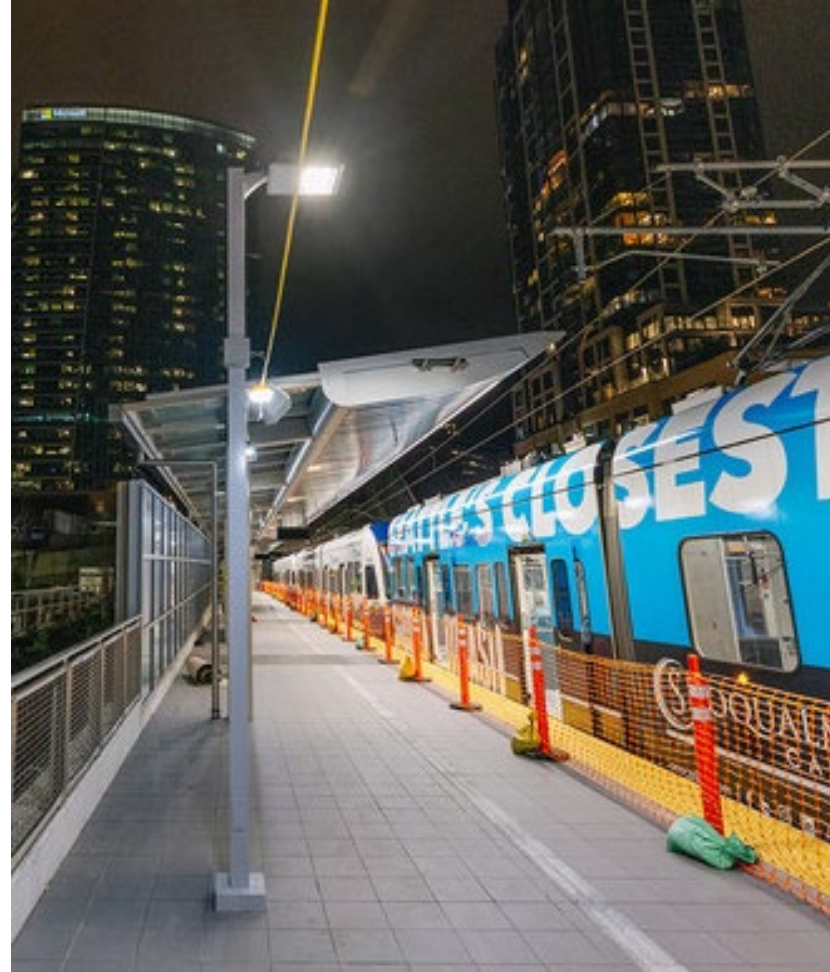
System Expansion Committee

06/08/23



Today's presentation

- Briefing only, no action needed today.
- Updated vehicle readiness for Lynnwood Link Extension (LLE) and East Link Starter Line (ELSL) openings in 2024



- Link light rail
- Lynnwood–Angle Lake
- Redmond Technology–South Bellevue
- Tacoma Dome–St Joseph
- Sounder trains
- Everett–Seattle
- Lakewood–Seattle
- ST Express buses
- Current routes



System overview

1 Line to Lynnwood (LLE)

2 Line Eastside (ELSL)

★ Operations & Maintenance Facilities (OMFs) in Sodo and Bellevue

- LLE is on schedule to open with service constraints in summer/fall 2024.
- ELSL could be open with service constraints in Spring 2024 pending ongoing assessment of system-wide needs and Board approval later this year.

Vehicles and construction in parallel

- As construction completes on Lynnwood Link Extension and East Link Starter Line, existing and new vehicles are prepared for expanded service
- Vehicle readiness:
 - Availability = commissioning new vehicles and retrofitting existing vehicles; spare ratios for fleet reliability
 - Storage = adequate space to clean and maintain vehicles for daily service

Vehicle Overview (Availability)

Series 1

- 62 total vehicles
- Key efforts:
 - Automatic Train Protection (ATP) retrofits
 - eSuite upgrade to improve communications
 - Mid-life overhauls



Series 2

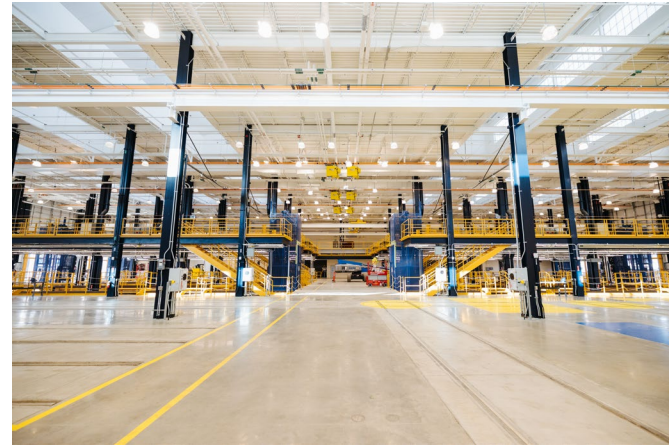
- Deliveries every month; initial delays but now accepting at steady rate
- Above-average downtime for open design changes and warranty repairs
- 80 vehicles currently in service out of 152 ordered



***Operations & Maintenance
Facilities – Central and East
(Storage)***

OMF Central and OMF East

- OMF Central: 104-car yard
- OMF East: 96-car yard
- Space for:
 - Daily cleaning and maintenance
 - Heavy maintenance and repairs
 - Spare parts inventory and tools
 - Right-of-way maintenance shops and non-revenue support vehicles
 - Operators, dispatch, training, admin
 - Facilities



OMF East Serving East Link Starter Line

Extension	Vehicles available for service	Adequate vehicle storage space
ELSL <i>(service assumption: 10-min headways; 14-hrs/day; 2-car consists)</i>	23 vehicles <input checked="" type="checkbox"/> <i>(projected)</i>	<input checked="" type="checkbox"/>

= ready or on track

= on track with some risks

= major risks

- Link light rail
- Lynnwood-Angle Lake
- Redmond Technology-South Bellevue
- Tacoma Dome-St Joseph
- Sounder trains
- Everett-Seattle
- Lakewood-Seattle
- ST Express buses
- Current routes



Until I-90 segment connects OMF East and 1 Line

Fewer vehicles for the 1 Line which means reduced span of service, headways, and/or length of trains for Lynnwood extension

OMF Central Serving Lynnwood

Extension	Vehicles available for service	Adequate vehicle storage space
Lynnwood to Angle Lake <i>(service assumption: 8-min headways; 20-hrs/day; combo of 3- and 4-car consists)</i>	99 vehicles <input type="checkbox"/>	<i>with additional storage of 20 vehicles on mainline</i> <input type="checkbox"/>
ELSL <i>(service assumption: 10-min headways; 14-hrs/day; 2-car consists)</i>	23 vehicles <input checked="" type="checkbox"/> <i>(projected)</i>	<input checked="" type="checkbox"/>

= ready or on track
 = on track with some risks
 = major risks

Actively managing our challenges

Vehicle readiness for LLE and ELSL:

- Availability = commissioning new vehicles and retrofitting existing vehicles; spare ratios for fleet reliability
- Storage = adequate space in OMFs to clean and maintain vehicles for daily service

Next steps for 2024 openings

Now through 2024

- Continue receiving/commissioning and retrofitting vehicles

August Board meeting(s)

- Present East Link Starter Line for early Board adoption in 2024 Service Plan

October

- Begin pre-revenue service for East Link Starter Line (pending Board approval)
- October REO & Board: present 2024 Service Plan for Board adoption

Thank you.



 [soundtransit.org](https://www.soundtransit.org)

